



BreezeNET® DS.11 Indoor Wireless LAN

Extending Broadband Connectivity with Mobility

As enterprises, campus communities and home offices expand and become more dependent on networking connectivity, the need to rapidly create and extend the LAN infrastructure is vital.

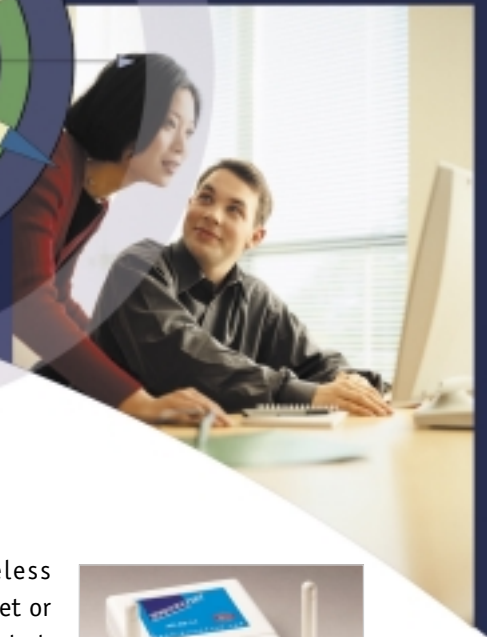
BreezeNET DS.11 delivers a powerful, fast and robust network infrastructure, ensuring company-wide connectivity at data rates of 11 Mbps with the added capability of seamless and uninterrupted roaming. With the freedom to move throughout the complex, workers are able to access files and applications at any time and from anywhere while substantially increasing productivity.

Featuring quick and easy installation and SNMP management, BreezeNET DS.11 is immediately deployed and scales easily to the changing needs of the network.

BreezeNET DS.11 is also ideal for temporary, ad-hoc networks, enabling and maintaining communication links among points of sale, or temporary office workgroups, without the need to lay any cables. BreezeNET DS.11 ensures uncompromising security to prevent network intrusion, data loss and abuse.

Features

- Direct Sequence Spread Spectrum technology operating in the 2.4 GHz ISM band.
- Seamless roaming at data rates of 11 Mbps.
- Indoor cell coverage of up to 150 m (500 ft).
- Dynamic data rate switching, ensuring optimal performance by minimizing the effects of interference.
- IEEE 802.11b and Wi-Fi compliance.
- Wired Equivalent Privacy (WEP) using the RC4 128-bit key encryption.
- Comprehensive network configuration, diagnostic and management system.
- Intelligent on-board PC card power management, extending the life of the portable computer battery.



AP-DS.11 Access

Provides access for wireless workstations to a wired Ethernet or wireless LAN. This wireless hub operates as a relay between cells and workstations equipped with 802.11b compatible wireless adapters, such as BreezeCOM's PC-DS.11.



PC-DS.11 PC Card

Connects any portable PC, with a type II or III PC card slot, to the wired or wireless LAN, via the Access Point and enables mobile roaming across overlapping cells without packet loss or duplication. The PC-DS.11 also enables direct peer-to-peer connectivity to any other PC or PCI DS.11 cards in the wireless network.



PCI-DS.11 PCI Card

Connects any desktop PC, with a PCI card slot, to the wired or wireless LAN, via the Access Point. This PCI-DS.11 also enables direct peer-to-peer connectivity to any other PC or PCI-DS.11 cards in the wireless network.

USB-DS.11 Station Adapter

Connects directly to the USB port of any desktop or portable computer. This station adapter enables communication via the Access Point to any other device connected to the wired or wireless LAN.

BREEZEcom
Wireless Access Solutions

anywhere



Specifications

Radio	
Wireless LAN standards radio type	Compliant with IEEE 802.11b HR Direct Sequence Spread Spectrum
Supported data rates	11, 5.5, 2, 1 Mbps with dynamic rate switching
Frequency range	2.400 - 2.4835 GHz ISM band - ETSI Europe 2.400 - 2.4835 GHz ISM band - US FCC 2.400 - 2.4835 GHz - Japan TELEC 2.4465 - 2.4835 GHz - France
Selectable sub channels	FCC: 1-11, ETSI: 1-13, Japan: 1-13, France: 10-13
Network architecture	Communication to wired networks via Access Points Ad-Hoc Peer-to-Peer networking

Range	
Typical range at 1 Mbps	1300 ft (400 m) open environment 240 ft (80 m) office environment
Typical range at 11 Mbps	360 ft (120 m) open environment 100 ft (30 m) office environment

	AP-DS.11	PC-DS.11/PCI-DS.11
Output Power		
Typical output power	18 dBm at max radiation direction	18 dBm at maximum radiation direction
Minimum output power	15 dBm	15 dBm

Security		
Authentication and data encryption	64-bit RC4 WEP	128-bit RC4 WEP
Sensitivity (BER 1E-6)	-82 dBm @ 11 Mbps -84 dBm @ 5.5 Mbps -85 dBm @ 2 Mbps -90 dBm @ 1 Mbps	-82 dBm @ 11 Mbps -84 dBm @ 5.5 Mbps -85 dBm @ 2 Mbps -90 dBm @ 1 Mbps

Configuration and Management		
Management, setup & diagnostics	Enhanced in-band SNMP based graphic configuration utility Enhanced out-of-band USB interface graphic configuration utility	Enhanced graphic configuration utility Site survey tool integrated into the configuration utility
LED indicators	Power Ethernet connection Wireless LAN activity	Wireless link Wireless LAN activity

Interfaces		
Ethernet	10BaseT	
PC		PC-Card: PCMCIA Type II compliant PCI-Card: PCI standard version 2.1

Antenna		
Integral	Integral: Two 2 dBi omni	Integral: patch antenna
External	External: Two SMA Connectors	Detachable: Dual 2 dBi omni External: SCX connector

Power		
Power	DC 5.0 V, 1.0 A (Typical) AC Adapter 100-240 V	Tx: 300 mA (500 mA max) Rx: 170 mA (300 mA max) Sleep: 10 mA (25 mA max)

Mechanical Dimensions		
	133.5 x 70 x 33 mm (Excluding antennas)	PC-DS.11: 128 x 54 x 5 mm PCI-DS.11: 140 x 120 mm

Environmental	
Operating temperature	Operating: 0°C to 50°C, Storage: -20°C to 60°C
Operating humidity	0% to 70% non-condensing

Standards Compliance	
EMC	EN 300-385, FCC Part 15
Safety	EN 60950, UL 1950

International Corporate Headquarters
BreezeCOM Ltd.

Phone: +972 3 645 6262
Fax: +972 3 645 6222
Email: corporate-sales@breezecom.com

North & South America Headquarters
BreezeCOM Inc.

Phone: (760) 517 3100
Fax: (760) 517 3200
Email: n.america-sales@breezecom.com

BreezeCOM Worldwide Offices:

Latin America & Caribbean

Phone: +598 2 712 3210
Fax: +598 2 712 3211
Email: s.america-sales@breezecom.com

Asia Pacific

Phone: +852 2786 9996
Fax: +852 2310 0062
Email: far.east-sales@breezecom.com

China

Phone: +86 10 6515 5833/34
Fax: +86 10 6515 5835
Email: china-sales@breezecom.com

France

Phone: +33 1 34 38 54 30
Fax: +33 1 34 38 54 39
Email: france-sales@breezecom.com

Germany

Phone: +49 69 29724 227
Fax: +49 69 29724 200
Email: germany-sales@breezecom.com

U.K. & Ireland

Phone: +44 1635 817344
Fax: +44 1635 817533
Email: uk-sales@breezecom.com

www.breezecom.com

©2001 BreezeCOM, Ltd.
BreezeCOM and BreezeNET are registered trademarks of BreezeCOM, Inc. and trademarks of BreezeCOM, Ltd. All other brand and product names are registered trademarks or trademarks of their respective companies. BreezeCOM does not take responsibility for any damages incurred due to technical inaccuracies in this document. Contents are subject to change without notification. No part of this publication may be reproduced in any material form without written permission from BreezeCOM, Inc. or BreezeCOM, Ltd.



The BreezeCOM suite of product lines includes:

- **BreezeACCESS:** Broadband wireless access in the sub-11 GHz bands, including the 3.5 GHz and MMDS licensed bands and the 2.4 GHz unlicensed bands.
- **BreezeNET:** Wireless indoor/outdoor networking in the unlicensed bands.
- **BreezeLINK:** Point-to-point T1/E1 connectivity.